

2004

C4BA A B

-
-

2012

C4A A AB CBE E E AB B

-
-
-
-

2019

C BBE A E E AB E E E
E E E E E A

-
-
-
-

2021

A B E E E E A B A E E E

-
-
-
-

2008

A B E E A E E E

-
-
-
-

2015

E E C A E C E E E C B A

-
-
-
-

2020

A B A A E A A E E E E C B A
A E A E A E E E

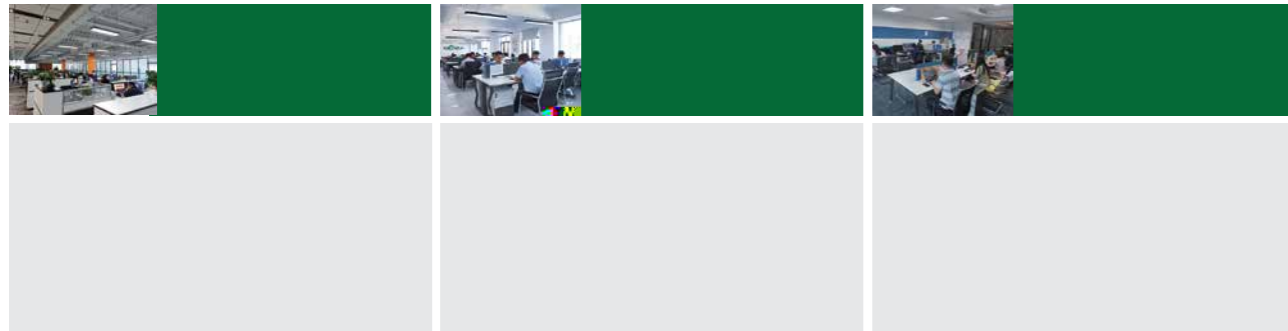
-
-
-
-

2024

E E E E A B E A E E E
E B A A E E A E E E

-
-
-
-

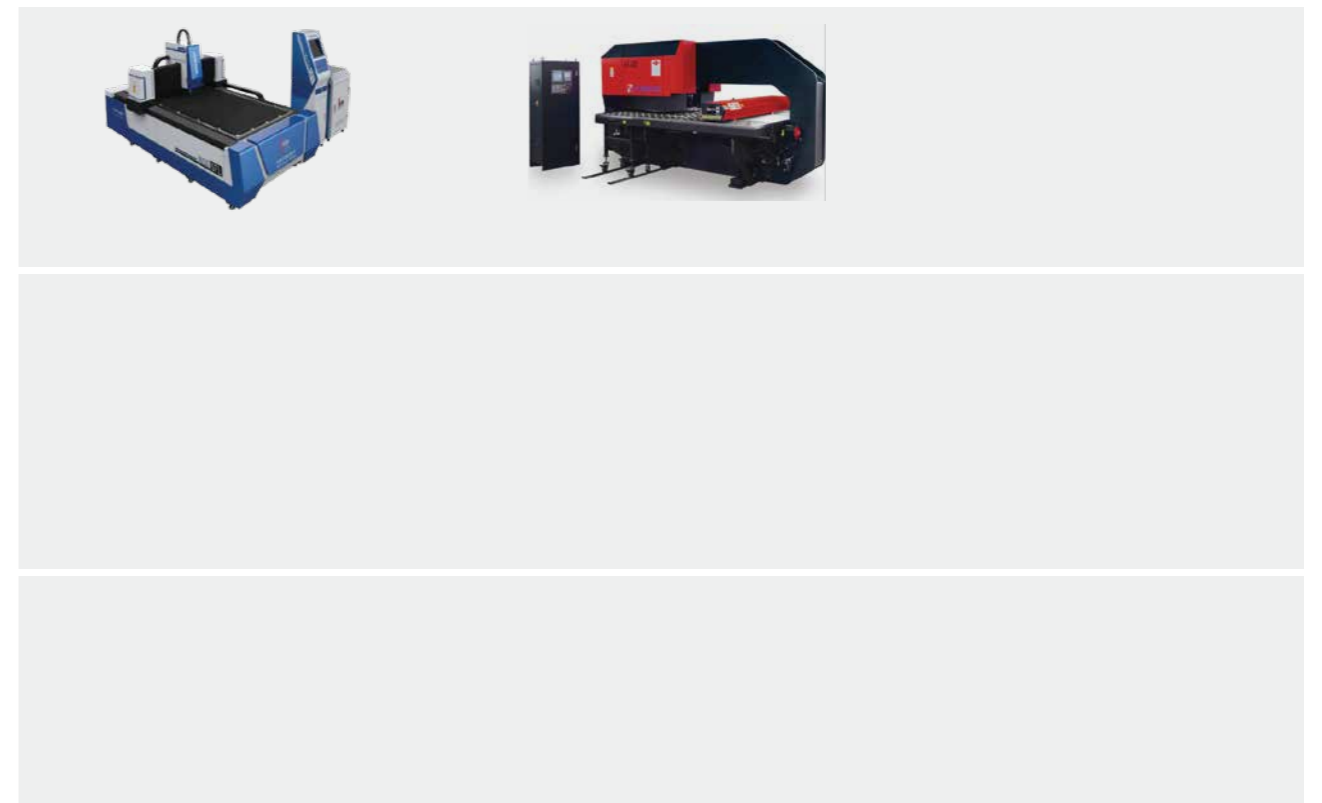




C A X A B C X A A A A A A I B E S B I B A B



A B B A B B

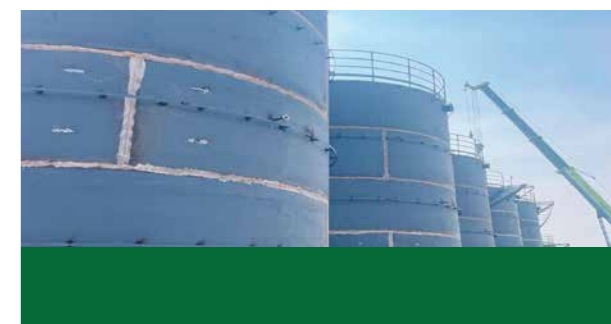


(& & &)

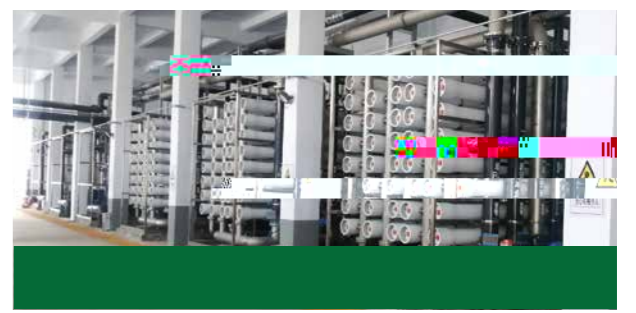
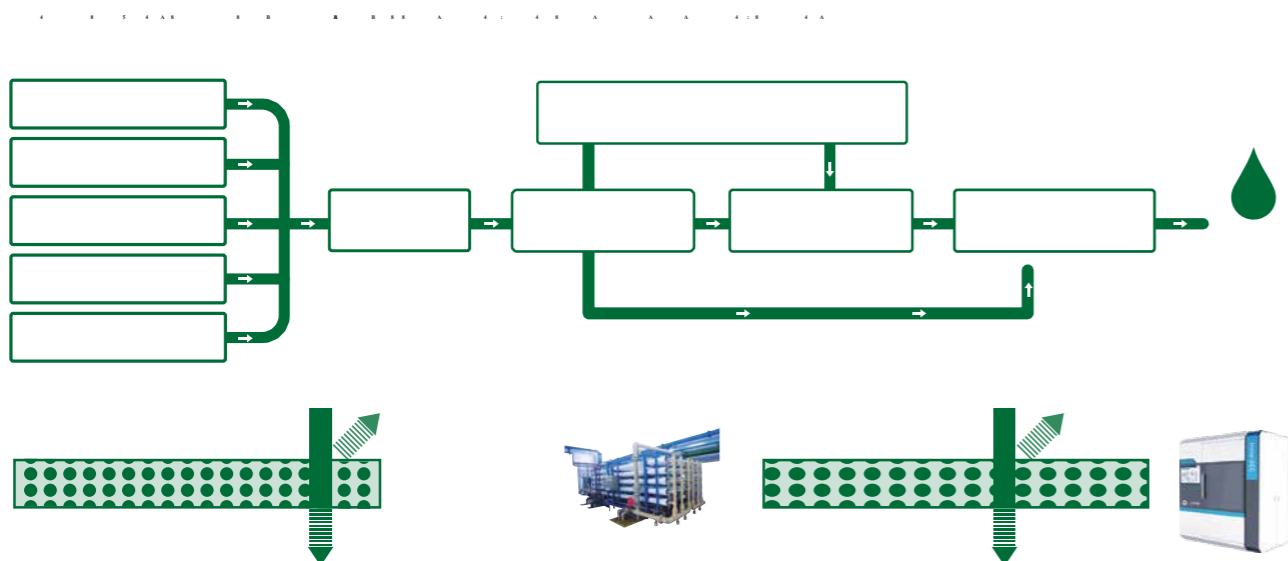
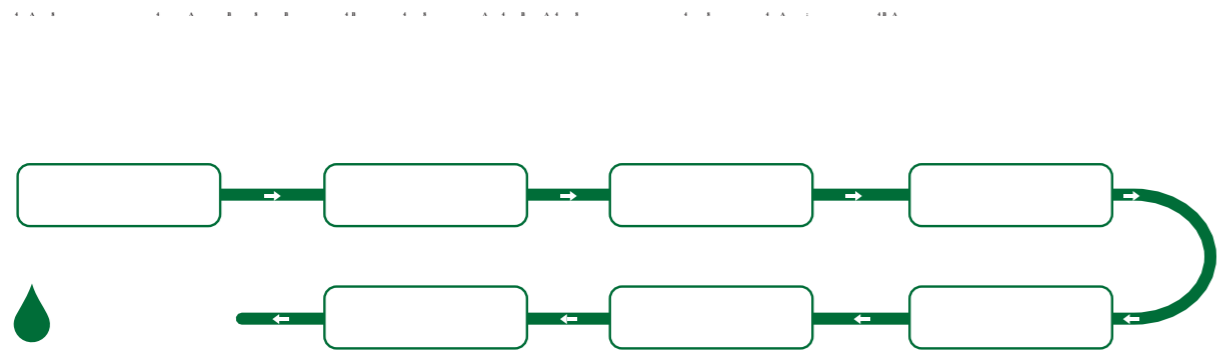
&

□

& &



01 工艺流程



①



Domestic sewage Bar Screen / Grit Chamber Equalization Tank / Biochemical Tank / MBR Pump Clean Water Tank / Disinfection Reuse



ft ti ti

②



.

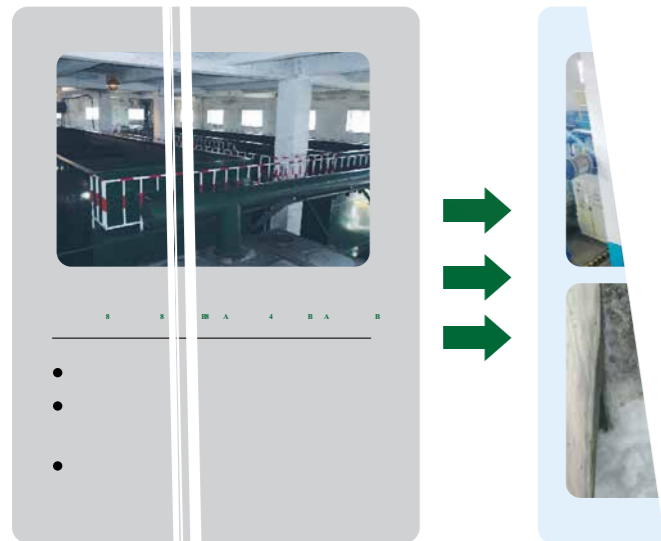
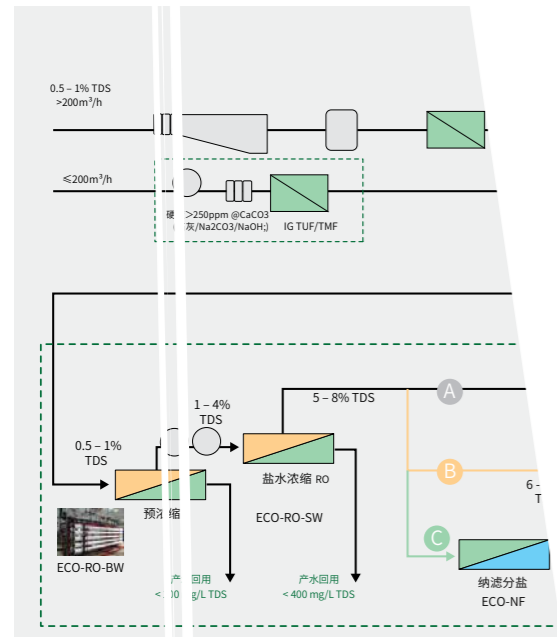
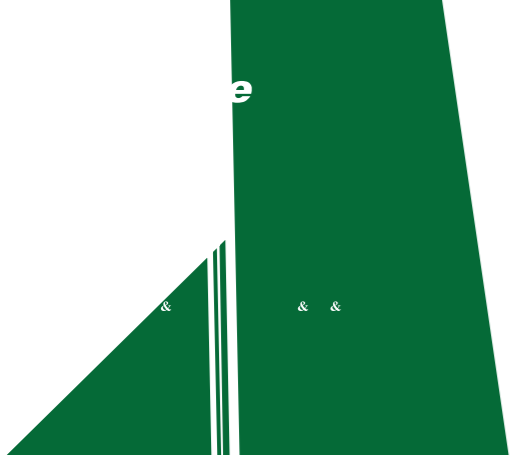
ti

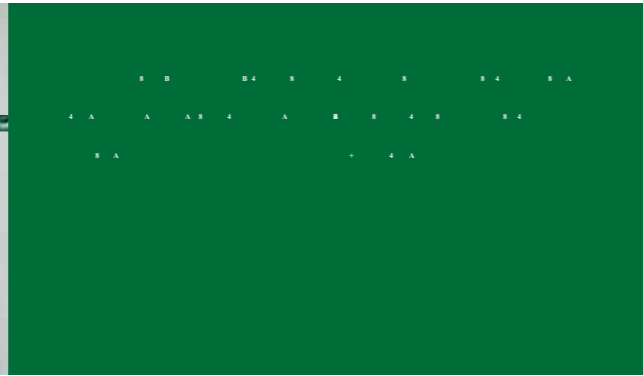
tt

ti



ti





ti

fe

ft ti ti



A		
B		
C	D	E
		Conductivity 0.2μs/cm(25C), SiO2 , Total Hardness 0Hardness 0
		Conductivity 0.08μs/cm(25C), SiO2 10ug/L, Total Hardness 0
		<0.2μS/cm(25), < , <
		Conductivity 0.5μs/cm(25C)
		Hydrogen Conductivity 0.3μs/cm(25C), SiO2 20ug/L, Total Hardness 2μmol/L
		Conductivity 0.1μs/cm(25C) SiO2 10ug/L, Total Hardness 0
		<0.1μS/cm(25)pH8.8-9.3(25), <
		Conductivity 0.2μs/cm(25C) SiO2 20ug/L, Total Hardness 0
		Resistivity 0.1M .cm, SiO2 20ug/L
		Hydrogen Conductivity 0.2μ s/cm(25C),SiO2 20ug/L, Hardness 0μmol/L, TOC 0.3mg/L
		(25) : 0.1 us/cm, Total Hardness 0
		(25) : 0.1 us/cm, Total Hardness 0
		Conductivity 0.2μs/cm(25C) SiO2 20ug/L, Total Hardness 0
		Conductivity 0.2μs/cm(25°C); SiO2 ; (CaCO3)Total Hardness 0μmol/L; Oil 0.3mg/L
		<0.1μS/cm(25); < ; Total Hardness 0
